



**Archeological
Mitigation at the Berryhill Creek
Site (34TU220), Tulsa County,
Oklahoma**



Stantec



Haley Rush and Kirsten McCullough

SAME Tulsa Post --August 20, 2024



Presentation Goals

We will cover the following items:

1. Overview of the Gilcrease Expressway Project
2. Identification of Site 34TU220
3. Environmental and Cultural Setting for Tulsa County
4. Archeological Findings
5. Summary, Thank yous!, and Q & A



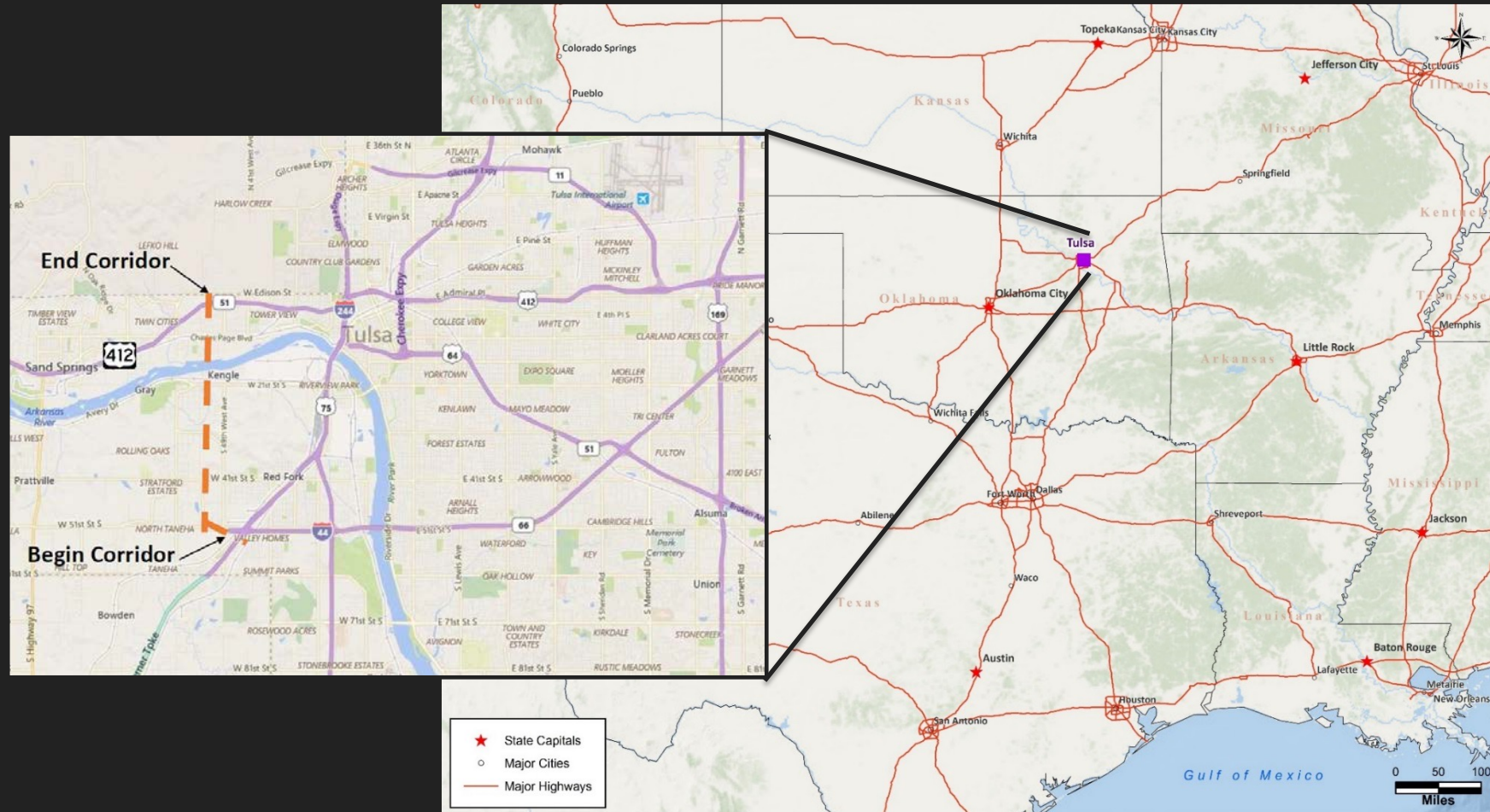
GILCREASE EXPRESSWAY PROJECT





Project Location and Purpose

- The Project was a planned extension of the existing expressway and transportation system in the Tulsa region and completed a segment of the loop between I-44 and US-412
- The purpose of the Project was to complete a portion of the planned loop around Tulsa, provide additional mobility across the Arkansas River, relieve congestion on other urban highways, and enhance access to West Tulsa.



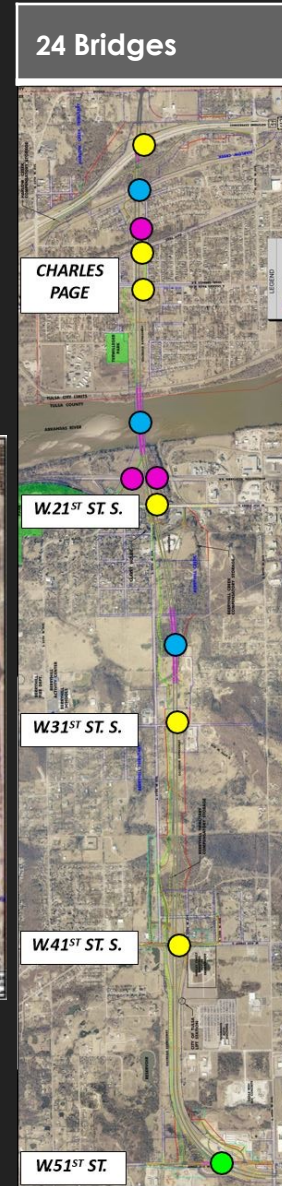


Project Description

- The Project is an approximately 5 mile, fully functional four lane divided tolled highway connecting I-44 to US-412
- Design features include:
 - 24 bridges
 - Four interchanges on the tolled highway located at W 51st St S, W 41st St S, W 21st St S, & US-412



Four interchanges



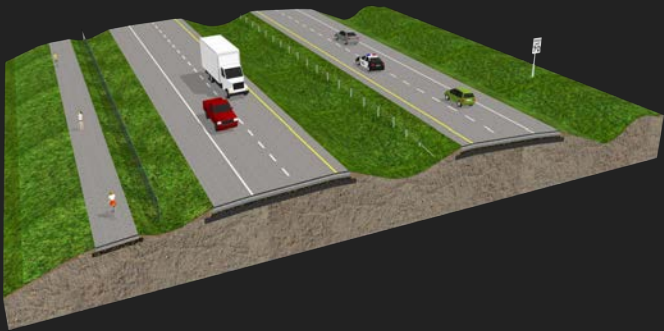
24 Bridges

● 12 – Street Overpass
● 1 – Street Underpass
● 5 – Railroad Overpass
● 6 – Waterway Overpass

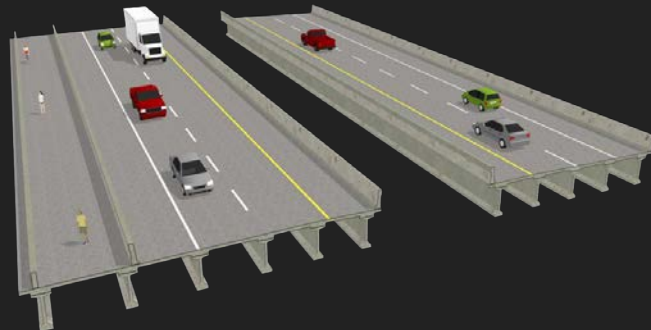
Design Features

- Four lane divided toll road, design speed 70 mph
- 22 bridges including two bridges (one in each direction) over the Arkansas River
- Parallel 10ft wide multi-use trail

Typical Section, Gilcrease Expressway West



Typical Section, Arkansas River Bridge



Environmental Process

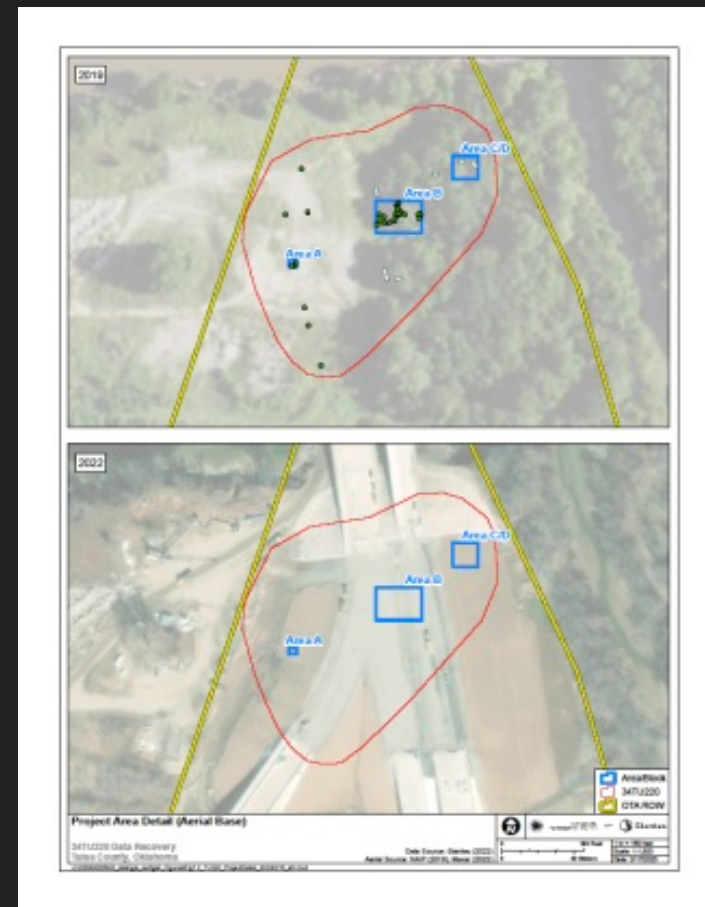
- Project was subject to NEPA authorization by FHWA
- ODOT contracted Garver to complete updated environmental studies and Reevaluation of 2000 EA.
- Updated archaeological studies were completed and consultation with the State Archaeologist, State Historic Preservation Office, and Native American tribes was completed.
- No significant archaeological resources were identified.
- As part of NEPA process, Osage Nation requested monitoring of construction in specific locations, including near Arkansas River crossing





Identification of 34TU220

- July 17th, 2020, ODOT notified by OTA of a find by an Osage Nation archeological monitor
- ODOT archeologists conducted initial investigation (eligible for NRHP)
- Scope was produced by Stantec (formerly Cox | McLain), reviewed by ODOT (FHWA liaison in Oklahoma), and reviewed by Consulting Parties (SHPO, OAS, Tribes)
- Scope was finalized on August 14, 2020
- Contract was executed on August 21, 2020
- Fieldwork between August 24 and October 5th, 2020
- Draft Report to ODOT March 2023





34TU220 Environmental Setting

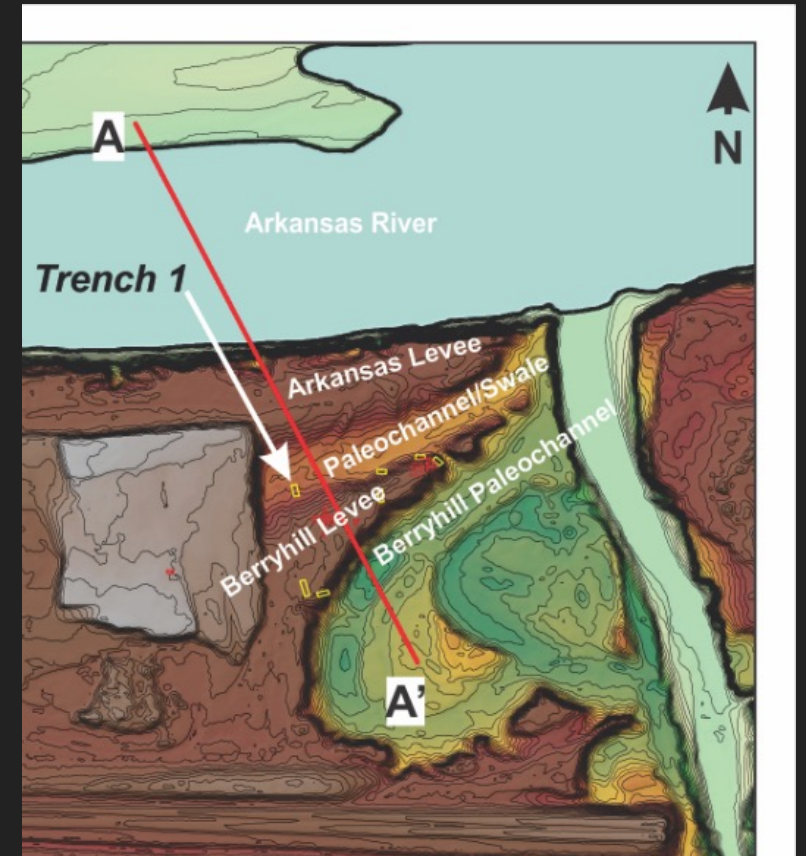
- **Osage Plains**
- **Cross Timbers**





Environmental Setting

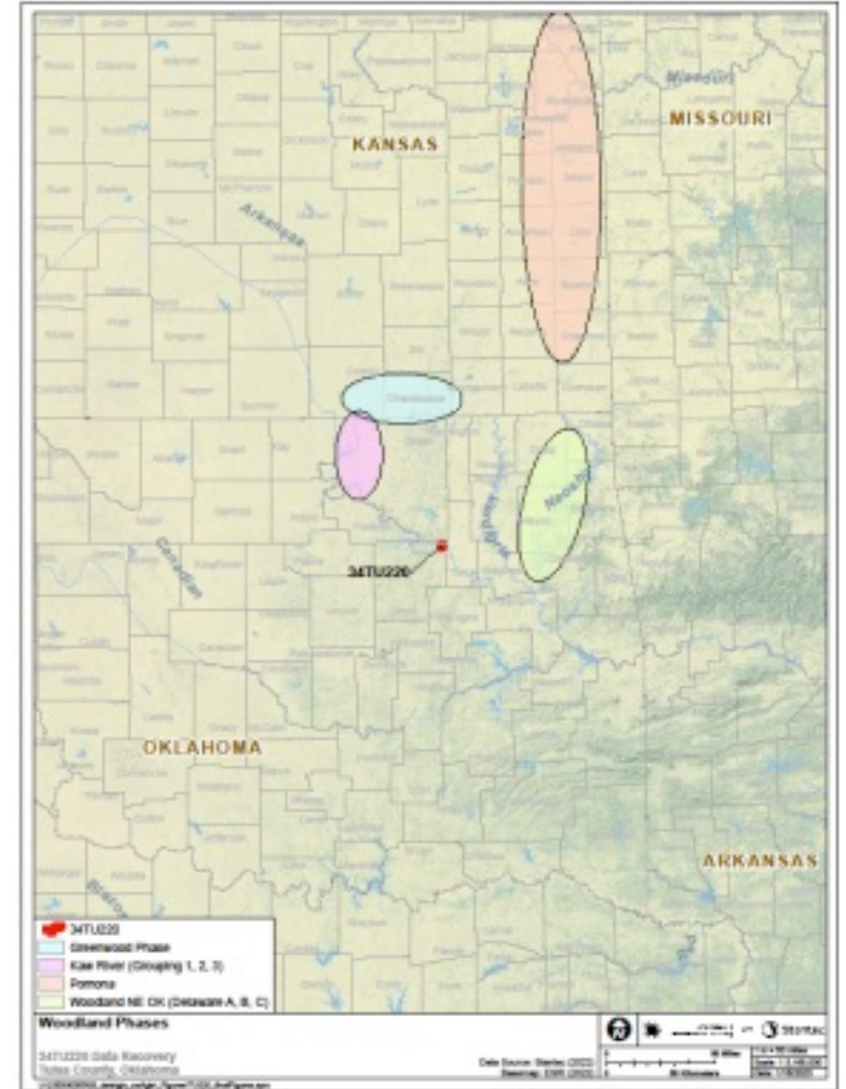
- Confluence of Arkansas River and Berryhill Creek
- Raw Materials





Cultural Setting

- Woodland (Ceramic Period) BCE 1000 to AD 1000
 - Increase in population, sedentism rises, plant cultivation, expanded use of ceramics, and increase used of bow and arrow
- Limited information for similar sites within Tulsa County, look to other parts of Oklahoma and other states (e.g., Kansas)
 - Northeastern OK (Verdigris and Neosho River Valleys)
 - North-Central OK (Kaw Lake)
 - Southeastern Kansas





Findings and Methods

- Three distinct areas of the site (A, B, C-D)
- Primarily hand excavated units, supported by mechanical clearing and trenches
 - Mechanical clearing helps us get to the cultural deposits in deep settings
 - Trenches help us see a larger snapshot of the site to help plan hand excavations



34TU220 Findings

- Thermal Features
 - Evidence of cooking, heating, light
 - Varied preservation





Findings - Continued

- Ceramics

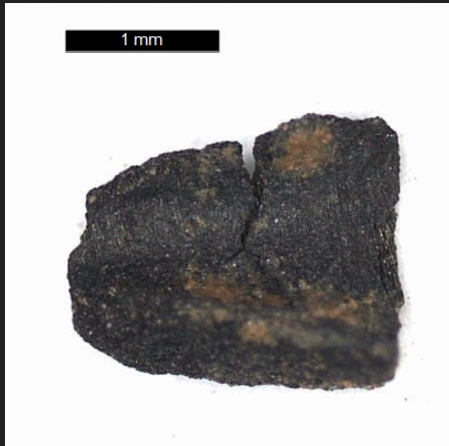




34TU220 Findings -

Continued

- Plants



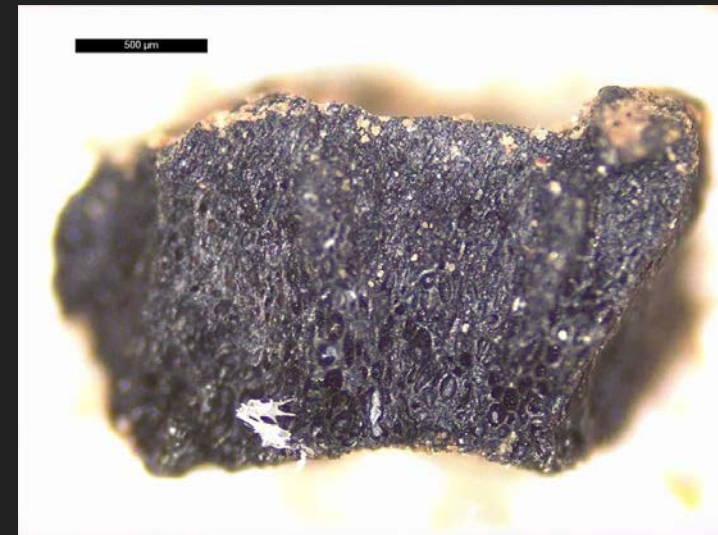
Corn cupule



Little barley



Knotweed



Squash or gourd

*images not scaled to each other



34TU220 Findings -

Continued

- Animals



Deer



Bison



Jack rabbit

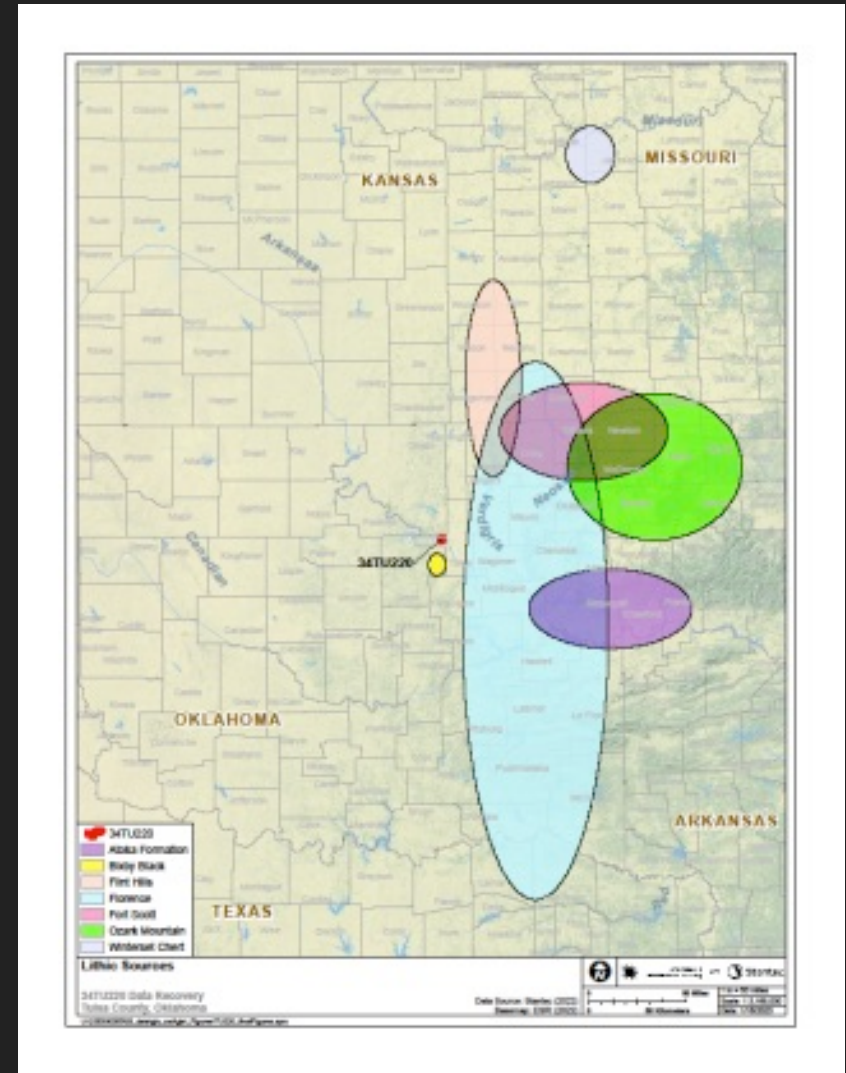


Turtle (slider)



34TU220 Findings - Continued

- Lithics





Summary

- Resource Procurement Site
- Functioned as part of larger network of sites
- Connections to well-defined Woodland occupations north of Tulsa County



Thank you!

- Field Team
- Report authors and specialists
- ODOT (Greg, Scott, Rhonda)
- OTA (Joe)
- Poe (Gene)
- Garver (Kirsten)

Questions?

